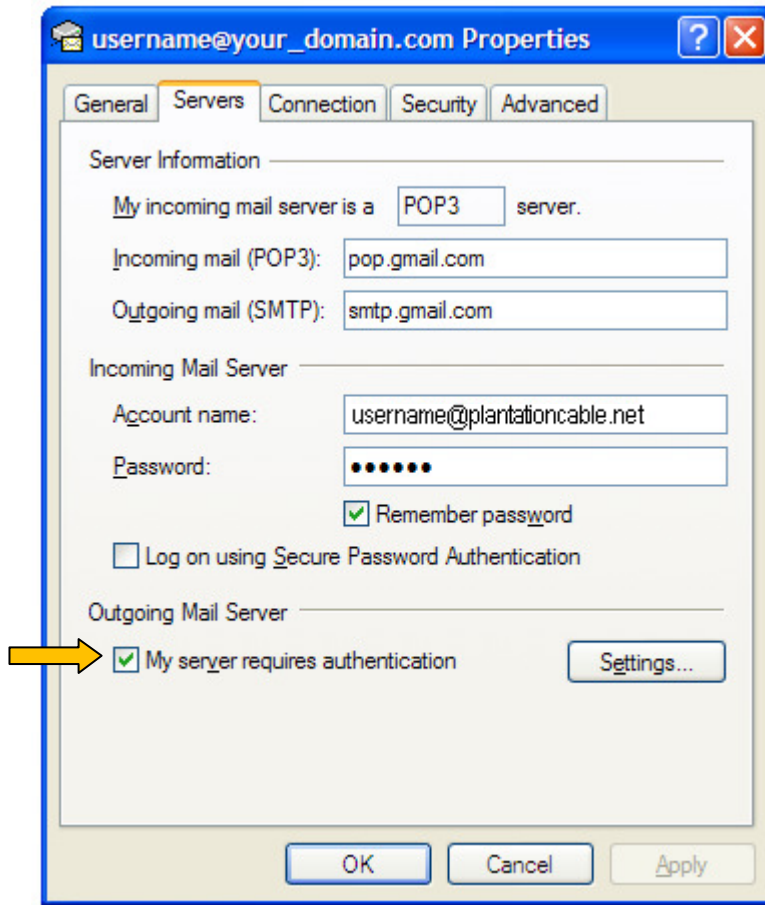


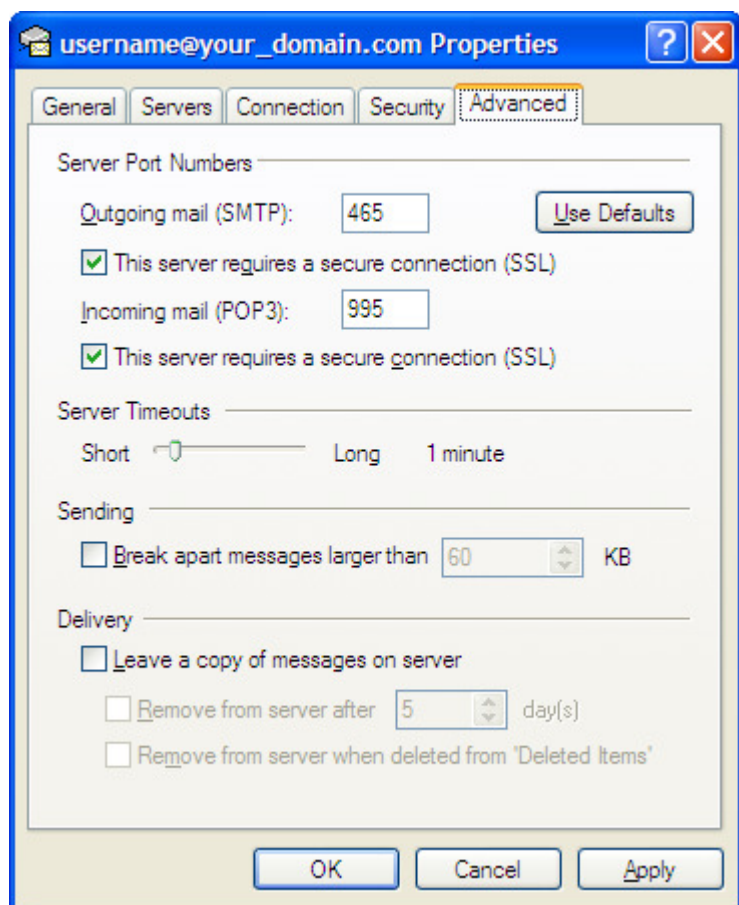
## Outlook Express

1. Open Outlook Express.
2. Click the **Tools** menu, and select **Accounts...**
3. Click the Mail tab, select your POP account and click **Properties**.



4. Click on the **Servers** Tab and change the following fields:  
**POP server:** pop.gmail.com  
**SMTP server:** smtp.gmail.com
5. Check the box next to **My server requires authentication**.

6. Click the **Advanced** tab.



7. Fill in the following information  
Check the box next to **This server requires a secure connection (SSL)** under **Outgoing Mail (SMTP)**.  
Enter **465** in the **Outgoing mail (SMTP):** field.  
Under **Outgoing Mail (SMTP)**, check the box next to **This server requires a secure connection (SSL)**.  
Under **Incoming mail (POP3)**, check the box next to **This server requires a secure connection (SSL)**. The port will change to **995**.
8. Click **OK**.